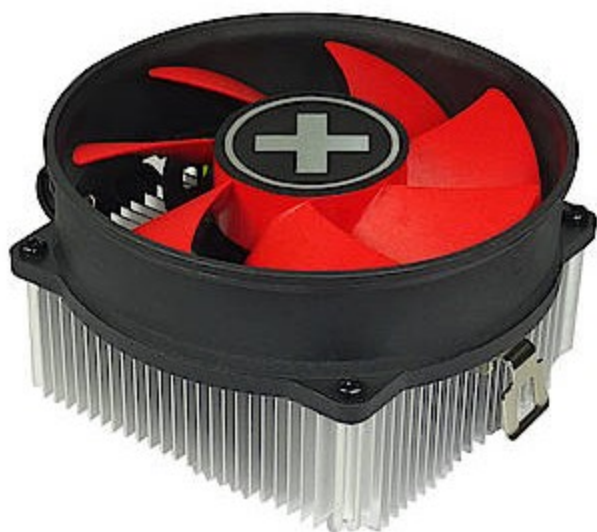


# Xilence XC035 computer cooling system

---



<b>Artikel</b>	603340
<b>Herstellernummer</b>	XC035
<b>EAN</b>	4044953500770
Xilence	

The A250PWM by Xilence - known for its silent PC-components and excellent price performance ratio – ensures efficient cooling of high-performance CPUs due to its high air flow. The red 92mm fan has hydro bearing and PWM control which makes it extremely silent. The cooler is appropriate for all current AMD Sockets (754/939/FM2+/FM1/FM2/AM3+/AM3/AM2+/AM2 ). The easy-clip system provides for a very simple handling and installation.

## Zusammenfassung

---

The A250PWM by Xilence - known for its silent PC-components and excellent price performance ratio – ensures efficient cooling of high-performance CPUs due to its high air flow. The red 92mm fan has hydro bearing and PWM control which makes it extremely silent. The cooler is appropriate for all current AMD Sockets (754/939/FM2+/FM1/FM2/AM3+/AM3/AM2+/AM2 ). The easy-clip system provides for a very simple handling and installation.

Xilence XC035, Cooler, 9.2 cm, 1000 RPM, 2800 RPM, 39.4 dB, 44.37 cfm

Xilence XC035. Type: Cooler, Fan diameter: 9.2 cm, Rotational speed (min): 1000 RPM, Rotational speed (max): 2800 RPM, Noise level (low speed): 17.8 dB, Noise level (high speed): 39.4 dB, Maximum airflow: 44.37 cfm. Width: 95 mm, Depth: 95 mm, Height: 63 mm. Product colour: Black, Red

## Merkmale

---

### Logistics data

Harmonized System (HS) code 84733080

### Power

### Design

Product colour	Black, Red
Certification	CE

### Weight & dimensions

Width	95 mm
Depth	95 mm

Power consumption (typical) 95 W

Height 63 mm

Weight 270 g

Fan dimensions (W x D x H) 92 x 92 x 25 mm

## Technical details

Sustainability certificates RoHS

## Performance

Suitable location Processor

Type Cooler

Fan diameter 9.2 cm

Supported processor sockets Socket 754, Socket 939, Socket 940, Socket AM2, Socket AM3, Socket AM3+, Socket FM1

Compatible processor series AMD A

Rotational speed (min) 1000 RPM

Rotational speed (max) 2800 RPM

Noise level (low speed) 17.8 dB

Noise level (high speed) 39.4 dB

Maximum airflow 44.37 cfm

Pulse-width modulation (PWM) support Y

Preisänderungen und Irrtümer vorbehalten. Alle Produkte solange der Vorrat reicht.