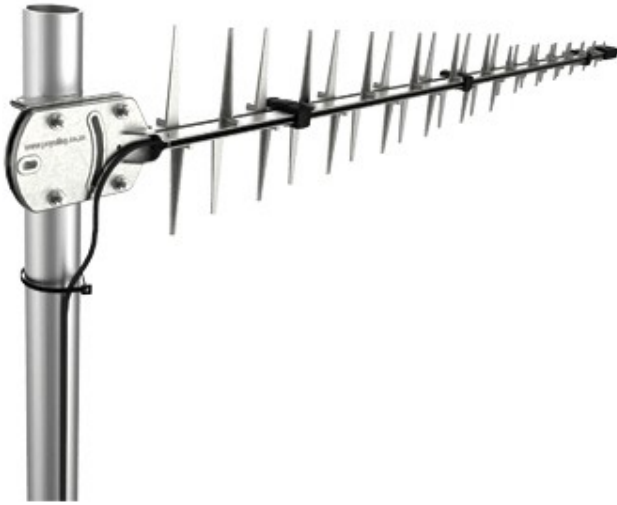


# Poynting LPDA-92 network antenna

---



<b>Artikel</b>	461653
<b>Herstellernummer</b>	A-LPDA-0092
<b>EAN</b>	6009693810556
Poynting	

This high-gain, wideband, directional antenna is designed to cover all international cellular, mobile, and wireless data bands, including GSM 900, GSM 1800, UMTS, and LTE. It also supports extended cellular and WiMAX bands, such as the European/USA Digital Dividend bands and the 2.3–2.7 GHz licensed and unlicensed data bands, ensuring compatibility with various wireless communication systems.

**Ultra-Wideband Coverage:** Supports GSM, UMTS, LTE, and WiMAX bands, ensuring seamless connectivity.

**Consistent High-Gain Performance:** Delivers reliable signal strength across all supported frequencies.

**Optimised for Wireless Communication Systems:** Ideal for use in LTE, HSPA, 3G, EDGE, and GPRS networks.

**Proven Reliability:** Successfully deployed in extreme weather conditions across Africa and Europe with near-zero failure rates.

**Ideal for Challenging Signal Environments:** A trusted solution in areas where network operators face signal challenges.

This high-performance antenna is the perfect choice for enhancing mobile and wireless data connectivity, offering robust and reliable performance in even the most demanding environments.

## Zusammenfassung

---

This high-gain, wideband, directional antenna is designed to cover all international cellular, mobile, and wireless data bands, including GSM 900, GSM 1800, UMTS, and LTE. It also supports extended cellular and WiMAX bands, such as the European/USA Digital Dividend bands and the 2.3–2.7 GHz licensed and unlicensed data bands, ensuring compatibility with various wireless communication systems.

**Ultra-Wideband Coverage:** Supports GSM, UMTS, LTE, and WiMAX bands, ensuring seamless connectivity.

**Consistent High-Gain Performance:** Delivers reliable signal strength across all supported frequencies.

**Optimised for Wireless Communication Systems:** Ideal for use in LTE, HSPA, 3G, EDGE, and GPRS networks.

**Proven Reliability:** Successfully deployed in extreme weather conditions across Africa and Europe with near-zero failure rates.

**Ideal for Challenging Signal Environments:** A trusted solution in areas where network operators face signal challenges.

This high-performance antenna is the perfect choice for enhancing mobile and wireless data connectivity, offering robust and reliable performance in even the most demanding environments.

Poynting LPDA-92, 11 dBi, 0.698-3.8 GHz, 50 Ω, Directional antenna, SMA, Male

Poynting LPDA-92. Antenna gain level (max): 11 dBi, Frequency band: 0.698-3.8 GHz, Impedance: 50 Ω. Antenna type: Directional antenna, Antenna connector type: SMA, Connector gender: Male. Certification: MIL-STD 810G/ASTM B117. Width: 200 mm, Depth: 1112 mm, Height: 47 mm. Package width: 210 mm, Package depth: 1120 mm, Package height: 60 mm

# Merkmale

## Certificates

Certification	MIL-STD 810G/ASTM B117
---------------	------------------------

## Packaging content

Quantity per pack	1 pc(s)
-------------------	---------

## Performance

Frequency band	0.698-3.8 GHz
Impedance	50 ?
Antenna gain level (max)	11 dBi

## Operational conditions

Operating temperature (T-T)	-40 - 80 °C
Storage temperature (T-T)	-40 - 80 °C
Operating relative humidity (H-0 - 98% H)	
Storage relative humidity (H- 5 - 95% H)	

## Packaging data

Package width	210 mm
Package depth	1120 mm
Package height	60 mm
Package weight	2.02 kg

## Weight & dimensions

Width	200 mm
Depth	1112 mm
Height	47 mm
Weight	1.63 kg

## Features

Antenna type	Directional antenna
Antenna connector type	SMA
Connector gender	Male
Polarization	Linear polarization
Product colour	Silver
International Protection (IP) code	IP65
Survival wind speed	160 km/h
Power handling	10 W
Cable length	7 m
Cable type	HDF 195
Mounting	Pole
Purpose	Indoor & outdoor

Preisänderungen und Irrtümer vorbehalten. Alle Produkte solange der Vorrat reicht.